

Pets |  
Anifeiliaid Anwes |



Early Years  
Wales  
Blynyddoedd  
Cynnar Cymru







Early Years  
Wales  
Blynyddoedd  
Cynnar Cymru



Hamster / **Bochdew**



Gold Fish / **Pysgodyn Aur**



Dog / **Ci**



Rabbit / **Cwnignen**



Cat / **Cath**



Guinea Pig / **Mochyn Cwta**





Early Years  
Wales  
Blynyddoedd  
Cynnar Cymru



Snake / Neidr



Gecko / Geco



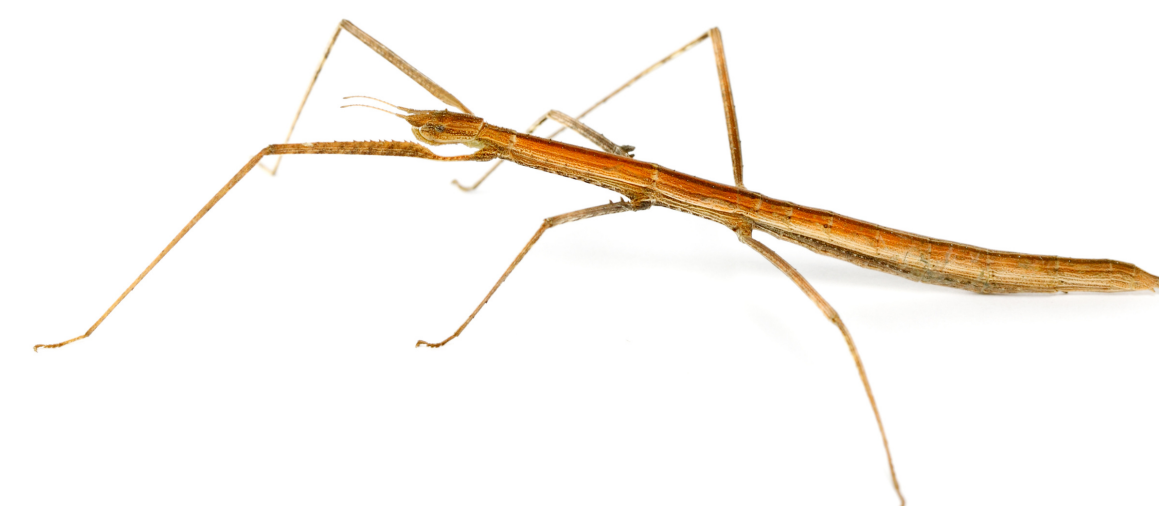
Lizard / Madfalli



Tarantula / Tarantwla



Tortoise / Crwban



Stick Insect / Pryfyn Ffon



Do you have a pet? Oes gen chi anifail anwes?



No I do not have a pet. Nac oes, does gen i ddim anifail anwes.



Yes, I have a ..... Oes, mae gen i .....



What is your pet called? Beth yw enw eich anifail anwes?



You must remember to give food and water to your pet. Rhaid cofio rhoi bwyd a dwr i'ch anifail anwes.



It's important to care for your pet. Mae'n bwysig gofalu am eich anifail anwes.







# Early Years Wales Blynyddoedd Cynnar Cymru

For more resources please visit:

<https://www.earlyyears.wales/en/welsh-language-support>

Am fwy o adnoddau ewch i:

<https://www.earlyyears.wales/cy/hwb-adnoddau>